



Website: www.inter-edge.com

InterEdge Technologies, LLC

19321-C U.S. Highway 19 North, Suite 408
Clearwater, Florida 33764 USA

Telephone: +1-727-536-2700 Fax: +1-727-536-2778

**InterEdge Technologies (Malaysia) Sdn Bhd
(691757-H)**

1&3, Lintang Bayan Lepas 1, Bayan Lepas Industrial Park
Phase IV, 11900 Bayan Lepas, Penang, Malaysia

Telephone: +604- 646 3381

Fax: +604- 646 3382

Intelligent Telephone Adapter 100 (ITA-100) Data Sheet **Dial-up VoIP Telephone Adapter with Integrated Router**

InterEdge Intelligent Telephone Adapters family provides the interface between the end user and the VoIP service provider's network. InterEdge Intelligent Edge Devices provides all the features necessary to provide a complete VoIP service solution. The ITA-100 is cost effective, effortless to install, and simple to use. This intelligent device connects end-users to VoIP networks in seconds.

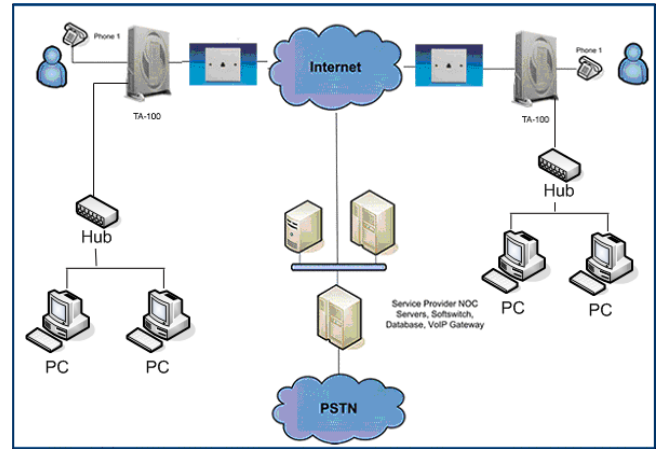
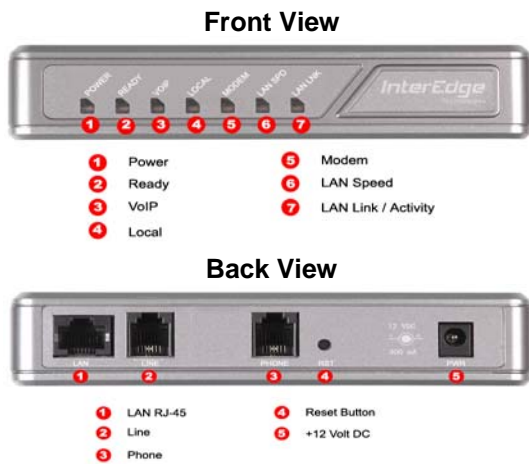
The ITA-100 allows VoIP service providers to expand their market by providing their offering to customers that use Dial-Up connection to access the Internet. The ITA-100 has an integrated modem that can connect up to 56 kbits per second insuring the necessary bandwidth to transport compress voice over Internet Protocol. In addition, the ITA-100 can be switch between the PSTN and the VoIP service provider by just pressing a pre-programmed code in the Dial-Key pad of your telephone set. Although growth in the broadband market is on the rise there are still many markets in the world that have no broadband services available or slow penetration of the broadband service. The ITA-100 is the product of choice for VoIP service providers to capture this un tap market.

InterEdge ITA-100 provides high quality voice by utilizing industry standards Voice Codecs such as G.723.1A, G.729A/B and many more and a proprietary Quality of Service (QoS) technology. In addition, the ITA-100 supports the following enhanced telephone features:

Call Waiting, Cancel Call Waiting, Caller ID with Name and Number, Caller ID Block, Do Not Disturb, Cal Transfer, Call Return, Call Back on Busy, Distinctive Ring, Voice Mail Warning Tone and Light Indicator, Off-hook Warning Tone, Call Forwarding on No Answer, Busy and All Calls.

The ITA-Series Adapters allow companies to protect their communications investments by allowing the emerging VoIP based services to co-exist with their legacy equipments and to also take advantage of the high quality but low cost long distance calls via the Internet. The low entry cost and flexibility of InterEdge's ITA-Series Adapter allows new telephone service providers to establish a market presence at a fraction of the cost of traditional/ legacy solutions in a very short time.

***** Physical Customization Available: Customer Logo/ Branding/ Case color *****



ITA-100 Technical Specification

Modem Line Circuit

Connection speed up to 56,000 bps
 Data modem formats V.92, V.90, V.34, V.32bis
 Automatic rate negotiation
 V.42, MNP2-4 error correction
 V.42bis, MNP5 data compression
 V.92 Quick Connect, Modem-On-Hold support
 Globally compliant line interface (FCC Part-68, FCC Part-15, IC-CS03, CTR21)
 Over-Voltage / Over-Current protection, >6,000 volt isolation
 SMS/MMS support
 Type-1 and Type-2 Caller ID / Subscriber Alerting Signal detection
 Parallel handset (intrusion) detection

Data Networking

One 10/100 Ethernet Port (LAN) with auto MDIX, MAC address (IEEE 802.3), IPv4 – Internet Protocol Ver-4, ARP – Address Resolution Protocol, DNS – A Record, SRV Record, DHCP Server – Dynamic Host Configuration Protocol, ICMP – Internet Control Message Protocol, TCP – Transmission Control Protocol, UDP – User Datagram Protocol – SIP over UDP/ IP, RTP – Real-Time Transport Protocol.

Physical Interface

One RJ45 Port (10/ 100 Ethernet), one RJ11 port (FXS), one RJ11 port (Modem Line).

Subscriber Line Interface Circuit

Ring Voltage: 60- 90 Vrms, Ring Frequency: 10- 40 Hz, Ring Waveform: Trapezoidal/ Sinusoidal, Ringer Load: 3-REN Max, On-Hook Voltage: 50 – 60V Nom, Terminating Impedance: Configurable, including – North American 600 ohm European CTR21

Voice Gateway

One Analogue Circuit Telephone Port (FXS), SIPv2 Session Initiation Protocol Ver-2, NAT Traversal (STUN), Configurable Codec List, Codec Types: G.723.1/A, G.729A/AB, Dynamic Payload, Adjustable Audio Frames per Packet, FAX Relay (T.38, V.17, V.29, V.27ter), FAX Tone Detection and Pass-through, DTMF – In-Band/ Out-of-Band (SIP Info), Call Progress Tone Generation, Adaptive Jitter Buffer, Full Duplex Audio, Echo Cancellation (G.165/G.168), Voice Activity Detection (VAD) with Silence Suppression, Attenuation/Gain Adjustments, Flash Hook Timer, Message Waiting Indicator (MWI) Tones, Reverse Polarity.

Regulatory Compliance Power Supply

UL, FCC Part 15 Class B, ICES-003, VCCI
 DC Input: +12 VDC at 500mA, Power Consumption: 6 Watts, Power Adapter: 100-240VAC, 50/60Hz, 1.8m Cord

Dimensions

14.3 cm (6.63") x 3.1 cm (1.22") x 10.5 cm (4.13").

Indicators (LED)

Power, Ready, VoIP, Local, Modem, LAN Speed, LAN Link/Activity

Provisioning, Administration and Maintenance Security

Web Browser Administration and Configuration (Integral Web Server), Telephone Key pad Configuration, Automated Provisioning and Upgrade via TFTP/HTTP, Report Generation and Event Logging, System Log and Debug Server Records
 Administrator and User Access Authorities, Password Protected Administration

Operating Temperature

41 to 113 °F (5 to 45 °C)

Storage Temperature

13 to 185 °F (-25 to 85 °C)

Relative Humidity

10 to 90%, Non-condensing, operating/non-operating

Warranty

One Year Hardware