



InterEdge Technologies, LLC

19321-C U.S. Highway 19 North, Suite 408 Clearwater, Florida 33764 USA

Telephone: +1-727-536-2700 Fax: +1-727-536-2778

InterEdge Technologies (Malaysia) Sdn Bhd (691757-H)

Unit No. 15-1, Persiaran Bayan Indah Bayan Bay, Sungai Nibong, 11900, Penang, Malaysia. Telephone: +604- 646 3381 Fax: +604- 646 3382

www.inter-edge.com

SIP Encryption / Decryption Server (EnDe-2000)

DATA SHEET

InterEdge's **SIP Encryption / Decryption Server** ensures the survivability of VoIP service providers in regions where packet filters have been implemented to block all SIP transmissions. Incumbent ISPs are applying new algorithms to detect VoIP traffic and stopping many VoIP companies established business.

With the implementation of InterEdge's encryption solution, InterEdge's customers can provide service using their existing infrastructure. InterEdge's EnDe-2000 interfaces with your existing Softswitch and Media Gateways. Our proprietary technology does not require VPN tunnels, the EnDe-2000 encrypts / decrypts the SIP signaling and the RTP data to make them traverse the Internet with out being detected.

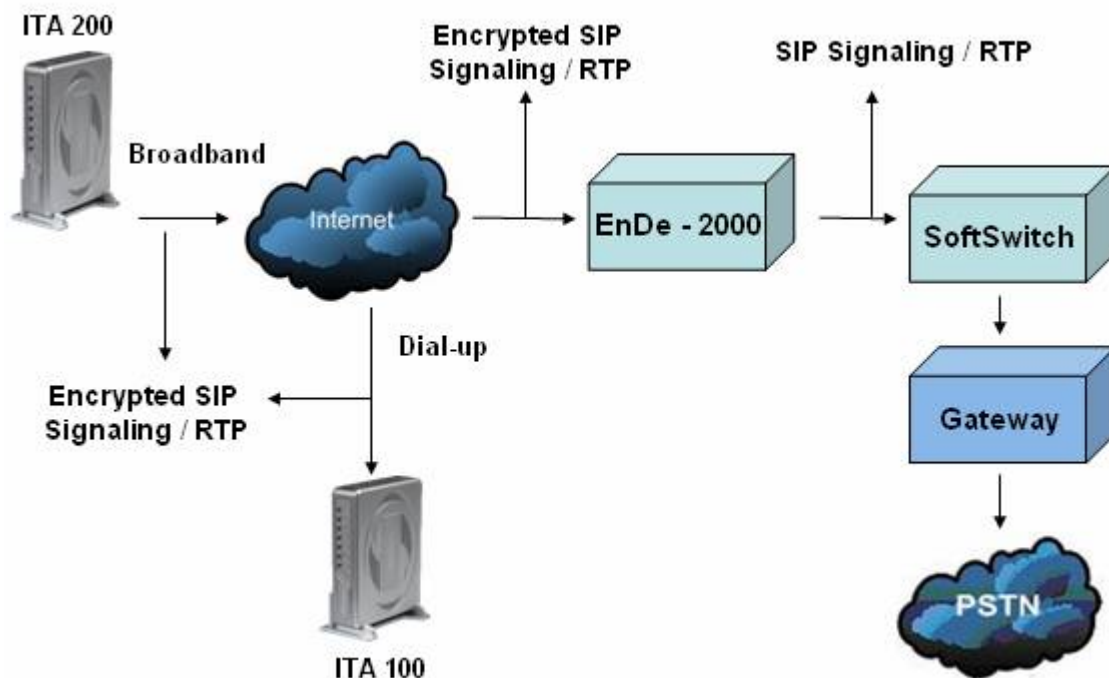


Figure 1. Typical EnDe-2000 Configuration

Server Requirements

LINUX Operating System.

- RedHat Linux Enterprise Edition
- Fedora Core 6 and above
- CentOS 4 and above

Single Processor Server (Pentium 4, Xeon, etc.), 1 GByte Memory, 40 MByte Hard Drive, 2 10/100 Ethernet Interfaces.

Features

- Softswitch Independent. Works with your existing Infrastructure.
- Works with other SIP CPE Devices in the same network.
- Very Fast Encryption / Decryption Algorithms.
- Automatically detects Encrypted SIP/RTP packets.