



***This Quick Installation is meant to help you to install the product easily and quickly. For detailed instructions on installation, configuration, and further setup options, please consult the Technical Reference Manual.***

### **Package Contents**



- One Intelligent Multimedia Device Model IMD-300
- One Power Adapter +12Volts DC, 500 mA
- One RJ-45 Ethernet Network Cable
- Quick Installation Guide
- V3000 3-way Video Conferencing Application software

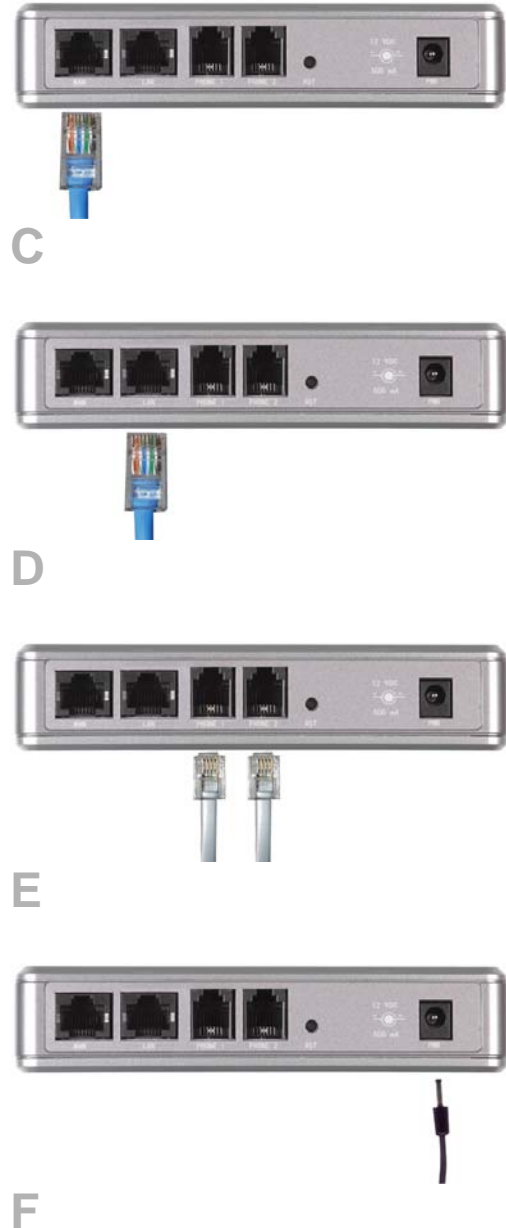
***Intelligent Multimedia Device***

***IMD-300***

***Quick Installation Guide***

# 1 Connect the ITA-200

- A** Before you begin, make sure that you have the setup information for your specific type of internet connection.
- B** Make sure that all of your network's hardware is powered off, including PCs, IMD-300, and cable or ADSL modem.
- C** Connect one end of the included Ethernet network cable to the WAN port, and the other end to the Ethernet port of the cable/ADSL modem or Ethernet connection.
- D** Connect one end of another Ethernet network cable to the LAN port of the device, and the other end to the Ethernet adapter on your PC.
- E** Connect two analogue telephone sets to the Phone ports 1 & 2.
- F** Connect the AC Power Adapter to the Power and the other end into an electrical outlet.
- G** Power on the following devices in this order: PC, IMD-300 and cable or ADSL modem, router.



**Important:**

**Make sure to use the power adapter that is supplied with ITA-200. The use of different power adapter could damage the ITA-200.**

# 2 Configuring the IMD-300

These instructions will show you how to configure the ITA-200.

**A** Open the web browser in your PC. Enter `http://192.168.10.1` in its Address field. Press the Enter key.

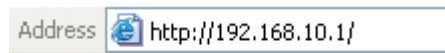
**B** A login screen will appear. Enter the default Username, `admin` and Password, `admin`, in lowercase letters in the Username and Password fields. (For added security, you should later set a new password in the Maintenance tab). Then click the Login button.

**C** For the WAN/ LAN Configuration, three connections types are offered though the drop-down menu. Each setup screen and available features will differ depending on which connection type you select.

## Internet Configuration Type

**Automatic Configuration – DHCP:** If you are connecting through DHCP or a dynamic IP address from your ISP, keep this default setting. (C1)

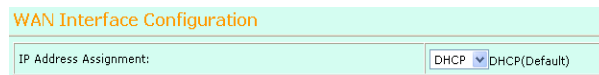
**Static:** If your ISP assigns you a static IP address, select Static IP from the drop-down menu. Complete the Internet IP address, Subnet Mask, Gateway and DNS fields. You need to enter at least one DNS address. (C2)



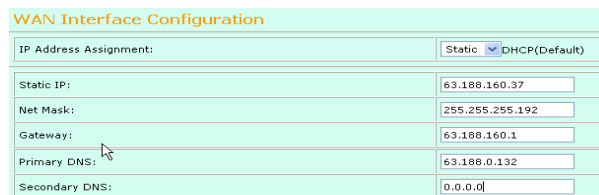
A



B



C1



C2

## IMD-300 Quick Installation Guide

PPPoE: if you are connecting through PPPoE, select PPPoE from the drop-down menu. Complete the Username and Password fields. (C3)

**D** When you are finished entering your Internet connection settings, click on the Update button to save your changes.

**E** If the user wants to obtain full access to all the web pages to configure SIP and other server information, he has to enter the super password in the password field. Super password is created using the following combination, the last 2 digits of the MAC address plus the 7<sup>th</sup> and 8<sup>th</sup> digits of the MAC address followed by **ieta200**.

For example:

MAC address = 000f26001f88  
the password will be **8800ieta200**  
**password is in lower case.**

To configure the VoIP Number, go to the SIP Configuration tab. Enter the SIP Proxy, VoIP number and password field. Click on the Update button to apply your changes.

**F** Reset IMD-300 to save the settings.

WAN Interface Configuration	
IP Address Assignment:	PPPoE DHCP(Default)
Login:	ta200
Password:	*****

C3

InterEdge  
TA-200

Unit Information | WAN/LAN Configuration | SIP Configuration | Services | Misc. Servers | Maintenance

**SIP Server Information (Primary)**

Sip Proxy Server 1: 111.222.333.444 Port #: 5060 Enable:   
Sip Domain/Registration Server 1: 111.222.333.444 Interval(s): 1200  
Local Sip Port: 5060 Nat Timer(sec): 15 Enable:

**SIP Server Information (Secondary for Backup)**

Sip Proxy Server 2: 0.0.0.0 Port #: 0 Enable:   
Sip Domain/Registration Server 2: 0.0.0.0 Interval(s): 0  
Local Sip Port: 5060 Nat Timer(sec): 0 Enable:

**SIP Client Information**

**Telephone #1 - Enable:**   
User ID 1: 1234567 Password: \*\*\*\*\* Display Name 1: 1234567  
Authentication ID 1: 1234567 Enable:

**Vocoder List Telephone 1**

Code: # 1: G.723.1 Code: # 2: G.711/PCMU Code: # 3: G.729 Code: # 4: G.729A  
Fax Codec:  T38  VBD Voice Frame per/IP Packet: 4 1-20 Default (4) Silence Sup:   
Media Port: 27000 1024 to 65535 Default (27000)  
Handset 1 Volume(Speaker): 6 db Default 0 db(Med) Handset 1 Volume(mic): 6 db Default 0 db(Med)

**Telephone #2 - Enable:**   
User ID 2: 7654321 Password: \*\*\*\*\* Display Name 2: 7654321  
Authentication ID 2: 7654321 Enable:

**Vocoder List Telephone 2**

Code: # 1: G.723.1 Code: # 2: G.711/PCMU Code: # 3: G.729 Code: # 4: G.729A  
Fax Codec:  T38  VBD Voice Frame per/IP Packet: 4 1-20 Default (4) Silence Sup:   
Media Port: 27000 1024 to 65535 Default (27000)  
Handset 2 Volume(Speaker): 6 db Default 0 db(Med) Handset 2 Volume(mic): 6 db Default 0 db(Med)

Update

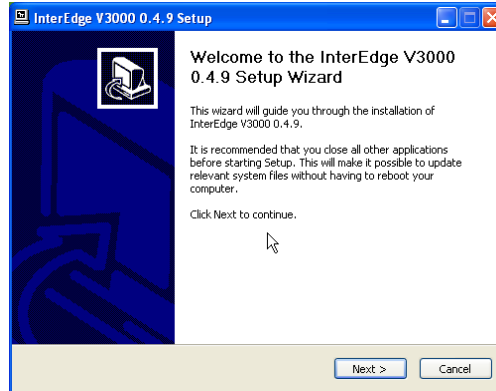
InterEdge Telephone Adaptor V1.0  
Copyright (c) 2004 InterEdge Technologies, All Rights Reserved.

E

# 3 Installing the V3000

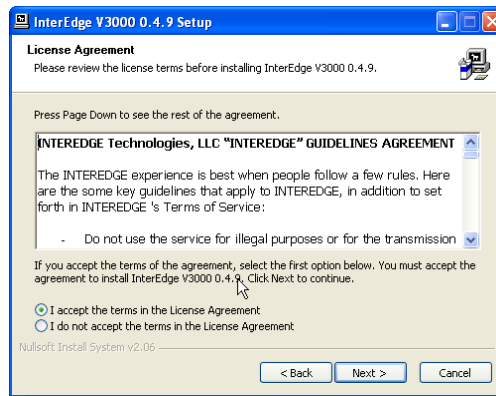
Please ensure that the driver is installed prior to connecting the Digital Camera & Camera is connected to your PC. It is recommended to exit all Windows application before installing the Video Conferencing V3000 software.

**A** To begin the installation, insert CD-ROM into the CD-ROM drive. Run the setup executable file called Setup.exe. The Welcome screen appears. Read the text that appears and click Next.



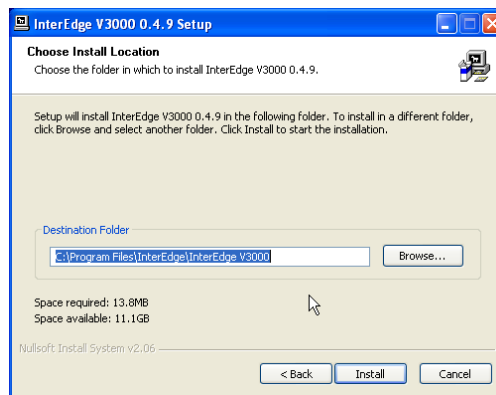
**A**

**B** Select the option “I accept the terms in the License Agreements”. Click on Next to proceed.



**B**

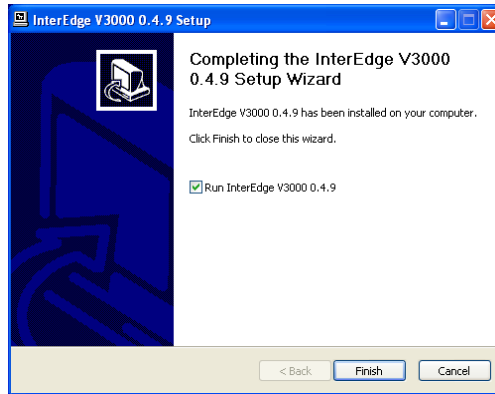
**C** Click on Next to accept the default Destination Directory (recommended). If you choose to use another directory, click Browse and choose the appropriate directory. Then, click install.



**C**

## IMD-300 Quick Installation Guide

**D** Click on the Finish button to complete the installation. Select Launch Video Conferencing V3000 at the final step of installation wizard to start using the application.



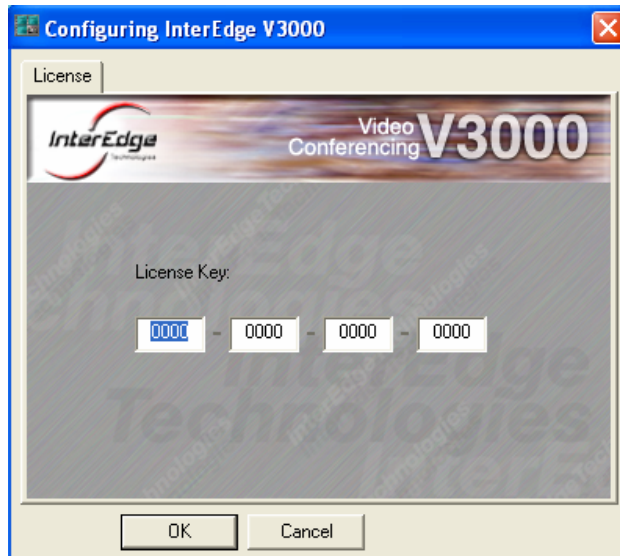
**D**

**E** Enter "interedge" in the Login Password field. Click OK.



**E**

**F** V3000 will prompt for license key when starting the program (first installation). Copy the License Key from the CD sleeve into the field labeled License Key. Click OK.



**F**

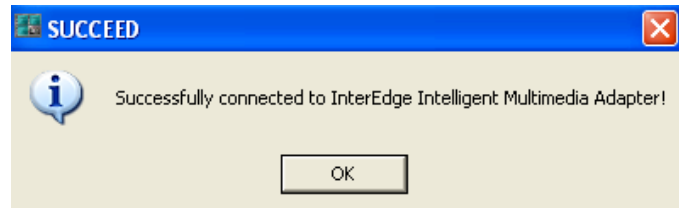
## IMD-300 Quick Installation Guide

**G** At this stage, V3000 is trying to register with the IMD-300. This may take few seconds.



G

**H** After successfully Registered with the IMD-300, you should see the message 'Successfully connected to InterEdge Intelligent Multimedia Adapter'. This indicates that you have both IMD-300 and Video Conferencing V3000 ready.



H